

MCA 11yrs on

VISIONARY



capacity can be difficult



causative nexus

show your working out



have the big picture

involve the right people



weed out irrelevant information

It's not an algorithm

Capacity fluctuates

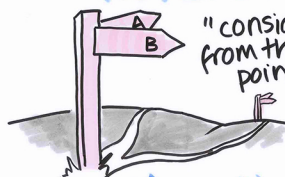
WHO IS THE DECISION MAKER?
is it me...?



is there an advance decision?

PAST COLLIDE PRESENT

BEST INTEREST



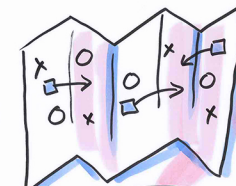
"consider matters from the patient's point of view"

its iterative

I am being consistently idiosyncratic

it continues to evolve

Liberty Protection Safeguards
16+ setting neutral more agencies



carry out Local Impact Assessments



how can you share resources across agencies

coordinate discussions

things to do now

Workshops

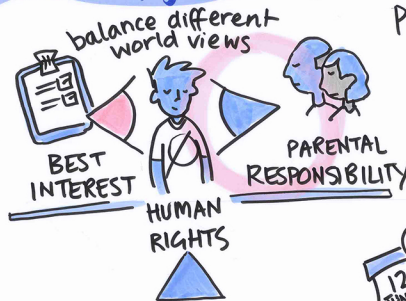
MCA Learning from SARs

Human rights balance
urgent ongoing
A+B
it's a structured decision
show your working out
don't be scared
A-B-C-D
based in evidence

Human rights are central
make a plan
Safeguarding
Complex Capacity
capacity doesn't negate duty of care

Executive Dys/function
yes its real
a diagnosis not a solution
can the person USE the information not just understand
processing appropriate behaviour
MCA Assessments + executive function
USE and WEIGH

Mental capacity for 16+17 year olds



not sure if we should be involved
call us
email us
we advocate with+for
People without support systems
we contribute to decision making
can be a statutory obligation to involve us
we contribute to decision making

Best Interest Decisions under the MCA

the persons involvement is central
expressed wishes
can be subjective so
when did you meet? where? its important to facilitate it
show your working out

12th JUNE

GETTING it RIGHT